

Kind Bites Edibles

1524 SE 15
Oklahoma City, OK 73129
kindbitesok@gmail.com
(405) 417-0587
Lic. #PAAA-NY85-EKIE

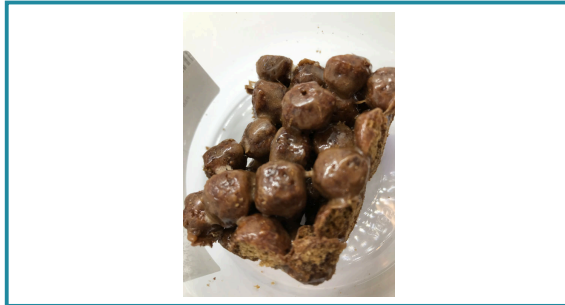
Sample: 2101ETS0232.0602

Strain: Chocolate Krispy Bar
Batch#: 9162; Batch Size: g
Sample Received: 01/28/2021; Report Created: 02/02/2021; Expires: 02/02/2022

Sampling: ; Environment:

Kind Bites

Ingestible, Baked Goods
Harvest Process Lot: ; METRC Batch: ; METRC Sample:



Safety

Not Tested Pesticides	Not Tested Microbials	Not Tested Mycotoxins
Not Tested Solvents	Not Tested Metals	Pass Foreign Matter

Cannabinoids

67.78 mg/unit Total THC	76.69 mg/unit Total CBD	NT <i>Not Tested</i> Moisture	NT <i>Not Tested</i> Water Activity
-------------------------------	-------------------------------	-------------------------------------	---

Analyte	LOQ mg/unit	Mass mg/unit	Mass mg/g
THCa		NR	NR
Δ9-THC		67.78	1.18
Δ8-THC		129.97	2.27
THCV		NR	NR
CBDa		NR	NR
CBD		76.69	1.34
CBDV		NR	NR
CBN		NR	NR
CBGa		NR	NR
CBG		NR	NR
Total		274.44	4.78

1 Unit = , 57.36g. Total THC = THCa * 0.877 + d9-THC. Total CBD = CBDa * 0.877 + CBD
LOQ = Limit of Quantitation; The reported result is based on a sample weight with the applicable moisture content for that sample; Unless otherwise stated all quality control samples performed within specifications established by the Laboratory.

Notes:

Terpenes

Analyte	LOD	LOQ	Mass



1717 West 33rd Street
Edmond, OK
(405) 216-5788
www.expresstoxicologyservices.com
Lic# LAAA-E1LK-2BLG

Kyle Goebel

Kyle Goebel
Laboratory Analyst

Confident Cannabis
All Rights Reserved
support@confidentcannabis.com
(866) 506-5866
www.confidentcannabis.com



This product has been tested by Express Toxicology Services using valid testing methodologies and a quality system as required by state law. Values reported relate only to the product tested. Express Toxicology Services makes no claims as to the efficacy, safety or other risks associated with any detected or non-detected levels of any compounds reported herein. This Certificate shall not be reproduced except in full, without the written approval of Express Toxicology Services. All Oklahoma Compliance Tests are 100% performed in-house on validated state of the art instrumentation. Due to unforeseen circumstances such as equipment failure etc. outsourcing a test may be necessary in order to complete your tests in the promised time period. We only outsource to those labs who have applied for an OMMA Laboratory License, Qualifying Accreditation and proven proficiency testing. If a test is outsourced it will be notated in the notes section of the particular outsourced test.