

## Kind Bites Edibles

1408 N Portland Ave  
OKC, OK 73107  
kindbitesok@gmail.com  
(405) 417-0587  
Lic. #PAAA-NY85-EKIE

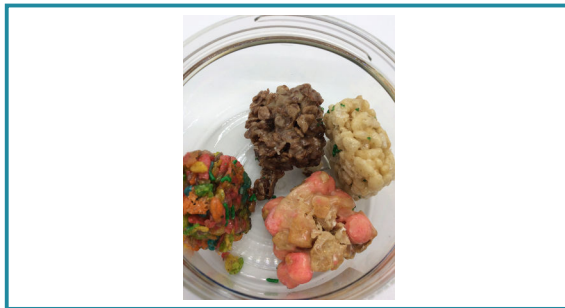
Sample: 2008ETS3090.9156

Strain: Unknown  
Batch#: 901129; Batch Size: g  
Sample Received: 08/10/2020; Report Created: 08/13/2020; Expires: 08/13/2021

Sampling: ; Environment:

## Krispy Bites

Ingestible, Baked Goods  
Harvest Process Lot: ; METRC Batch: ; METRC Sample:



## Safety

<b>Not Tested</b> Pesticides	<b>Pass</b> Microbials	<b>Not Tested</b> Mycotoxins
<b>Not Tested</b> Solvents	<b>Not Tested</b> Metals	<b>Pass</b> Foreign Matter

## Cannabinoids

<b>61.21 mg/unit</b> Total THC	<b>0.76 mg/unit</b> Total CBD	<b>NT</b> Not Tested Moisture	<b>NT</b> Not Tested Water Activity
-----------------------------------	----------------------------------	-------------------------------------	---




Analyte	LOQ mg/unit	Mass mg/unit	Mass mg/g
THCa		1.68	0.15
Δ9-THC		59.74	5.43
Δ8-THC		14.31	1.30
THCV		ND	ND
CBDa		ND	ND
CBD		0.76	0.07
CBDV		ND	ND
CBN		ND	ND
CBGa		ND	ND
CBG		1.25	0.11
<b>Total</b>		<b>77.74</b>	<b>7.07</b>

1 Unit = krispy bites, 11g. Total THC = THCa \* 0.877 + d9-THC. Total CBD = CBDa \* 0.877 + CBD

LOQ = Limit of Quantitation; The reported result is based on a sample weight with the applicable moisture content for that sample; Unless otherwise stated all quality control samples performed within specifications established by the Laboratory.

Notes:

## Terpenes

 Cinnamon	 Hops	 Orange
---	---	---

Analyte	LOD PPM	LOQ PPM	Mass PPM
β-Caryophyllene			55.00
α-Humulene			41.00
δ-Limonene			31.00
β-Myrcene			30.00
α-Pinene			25.00
α-Terpinene			NR
Camphene			NR
Caryophyllene Oxide			NR
cis-Nerolidol			NR
δ-3-Carene			NR
Eucalyptol			NR
γ-Terpinene			NR
Geraniol			NR
Linalool			NR
Ocimene			NR
(-) -β-Pinene			NR
(-) -α-Bisabolol			NR
(-) -Guaiol			NR
(-) -Isopulegol			NR
p-Cymene			NR
Terpinolene			NR
trans-Nerolidol			NR
<b>Total</b>			<b>182.00</b>



1717 West 33rd Street  
Edmond, OK  
(405) 216-5788  
www.expresstoxicologyservices.com  
Lic# LAAA-E1LK-2BLG

*Manaehe Dean*

Manaehe Dean  
Laboratory Analyst

Confident Cannabis  
All Rights Reserved  
support@confidentcannabis.com  
(866) 506-5866  
www.confidentcannabis.com



This product has been tested by Express Toxicology Services using valid testing methodologies and a quality system as required by state law. Values reported relate only to the product tested. Express Toxicology Services makes no claims as to the efficacy, safety or other risks associated with any detected or non-detected levels of any compounds reported herein. This Certificate shall not be reproduced except in full, without the written approval of Express Toxicology Services. All Oklahoma Compliance Tests are 100% performed in-house on validated state of the art instrumentation. Due to unforeseen circumstances such as equipment failure etc. outsourcing a test may be necessary in order to complete your tests in the promised time period. We only outsource to those labs who have applied for an OMMA Laboratory License, Qualifying Accreditation and proven proficiency testing. If a test is outsourced it will be notated in the notes section of the particular outsourced test.

## Kind Bites Edibles

1408 N Portland Ave  
OKC, OK 73107  
kindbitesok@gmail.com  
(405) 417-0587  
Lic. #PAAA-NY85-EKIE

Sample: 2008ETS3090.9156

Strain: Unknown  
Batch#: 901129; Batch Size: g  
Sample Received: 08/10/2020; Report Created: 08/13/2020; Expires: 08/13/2021

Sampling: ; Environment:

## Krispy Bites

Ingestible, Baked Goods  
Harvest Process Lot: ; METRC Batch: ; METRC Sample:



## Microbials

Pass

Analyte	Limit	Units	Status
E. Coli	0	CFU/g	Pass
Salmonella	0	ND	Pass
Staphylococcus aureus	0	ND	Pass
Yeast & Mold	0	ND	Pass

TNTC = Too Numerous to Count; Unless otherwise stated all quality control samples performed within specifications established by the Laboratory



1717 West 33rd Street  
Edmond, OK  
(405) 216-5788  
www.expresstoxicologyservices.com  
Lic# LAAA-E1LK-2BLG

*Manaehe Dean*

Manaehe Dean  
Laboratory Analyst

Confident Cannabis  
All Rights Reserved  
support@confidentcannabis.com  
(866) 506-5866  
www.confidentcannabis.com



This product has been tested by Express Toxicology Services using valid testing methodologies and a quality system as required by state law. Values reported relate only to the product tested. Express Toxicology Services makes no claims as to the efficacy, safety or other risks associated with any detected or non-detected levels of any compounds reported herein. This Certificate shall not be reproduced except in full, without the written approval of Express Toxicology Services. All Oklahoma Compliance Tests are 100% performed in-house on validated state of the art instrumentation. Due to unforeseen circumstances such as equipment failure etc. outsourcing a test may be necessary in order to complete your tests in the promised time period. We only outsource to those labs who have applied for an OMMA Laboratory License, Qualifying Accreditation and proven proficiency testing. If a test is outsourced it will be notated in the notes section of the particular outsourced test.